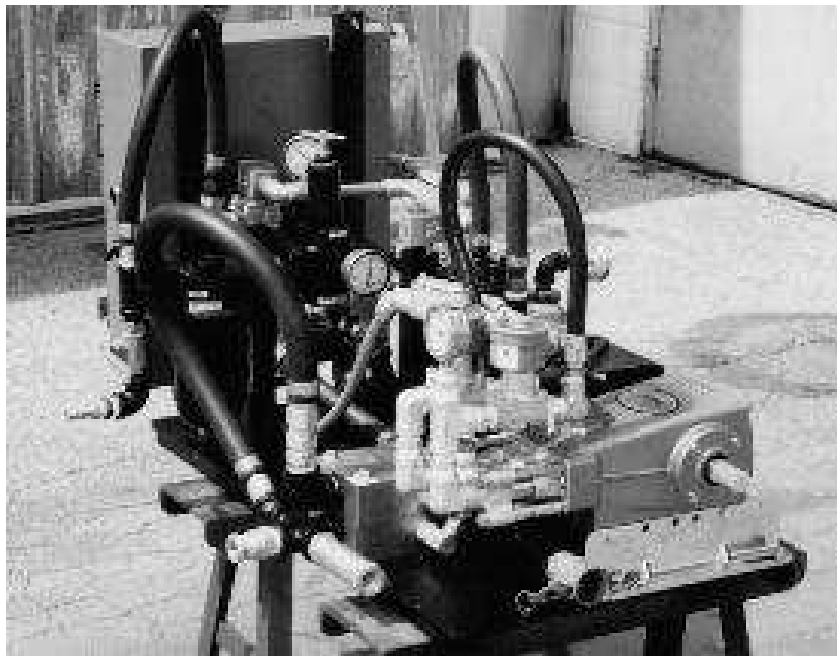


CONNECTING AND STARTING THE NTC/8 PNEUMATIC FOAM UNIT

1. HOOK UP THE JUMPER CABLE LEADS TO A 12 VOLT BATTERY IN YOUR COMPRESSOR.
2. HOOK UP THE AIR LINE FROM YOUR COMPRESSOR TO THE NTC/8 AIR INLET.
3. HOOK UP THE 100' FOAM HOSE TO THE FOAM OUTLET.
4. HOOK UP THE 10' FILL HOSE TO THE CHEMICAL OUTLET.
5. PRIME YOUR 10' FILL HOSE WITH APPROXIMATELY 1/2 GAL. OF WATER (THIS WILL PREVENT DAMAGE TO THE NTC/8 CHEMICAL PUMP).
6. CONNECT THE DIPLEG TO THE FILL HOSE AND INSERT INTO DRUM OF DILUTED AC-645. (NEVER LAY THE DIPLEG ON THE GROUND OR A DIRTY SURFACE, AS PARTICLES CAN BE SUCTIONED INTO THE CHEMICAL PUMP AND CAUSE DAMAGE.)



7. TURN ON/OFF SWITCH TO "ON". HOLD ONTO THE 100' FOAM HOSE.
8. USING THE REMOTE CONTROL OR THE OVERRIDE BUTTON, START THE NTC/8. INITIALLY YOUR CHEMICAL PUMP WILL RUN AT A HIGH RPM UNTIL CHEMICAL IS FLOWING THROUGH THE HOSE LINE. IF AFTER A FEW SECONDS THE PUMP IS STILL NOT PRIMED, SHUT OFF AND TURN ON AGAIN.
9. WHEN FOAMING IS COMPLETE, PRESS THE REMOTE BUTTON OR THE OVERRIDE BUTTON. THE NTC/8 WILL AUTOMATICALLY PURGE ANY EXCESS CHEMICAL IN YOUR FOAM HOSE WITH COMPRESSED AIR. THE HOSE WILL KICK - SO HOLD ON!
10. WHEN DONE FOAMING FOR THE DAY, PUT YOUR DIPLEG IN A 5 GALLON PAIL OF WATER AND RUN THE MACHINE TO CLEAN OUT THE HOSE LINES.
11. REMEMBER TO TURN YOUR ON/OFF SWITCH TO "OFF". IF THE SWITCH IS LEFT IN THE "ON" POSITION, AN ALARM WILL SOUND.